

An aerial photograph of a terraced landscape, likely a hillside or mountain range, showing intricate patterns of terraces. A yellow line is drawn across the top of the image, possibly indicating a path or boundary. The terrain is green and brown, suggesting vegetation and soil. In the bottom right corner, there is a small circular icon with a compass and a vertical scale bar.

Building the politics machine

Tools for resolving the global land grab

21°14'08.67" N 101°13'45.84" E

© 2008 Europa Technologies
Image © 2008 TerraMetrics
Image © 2008 GeoEye
elev: 847m

Jan 15, 2007

Google

Eye alt: 1.11 km

Michael B. Dwyer
UC Berkeley
Energy & Resources Group

LDPI Conference
IDS Sussex
April 6-8, 2011



BURMA

CHINA

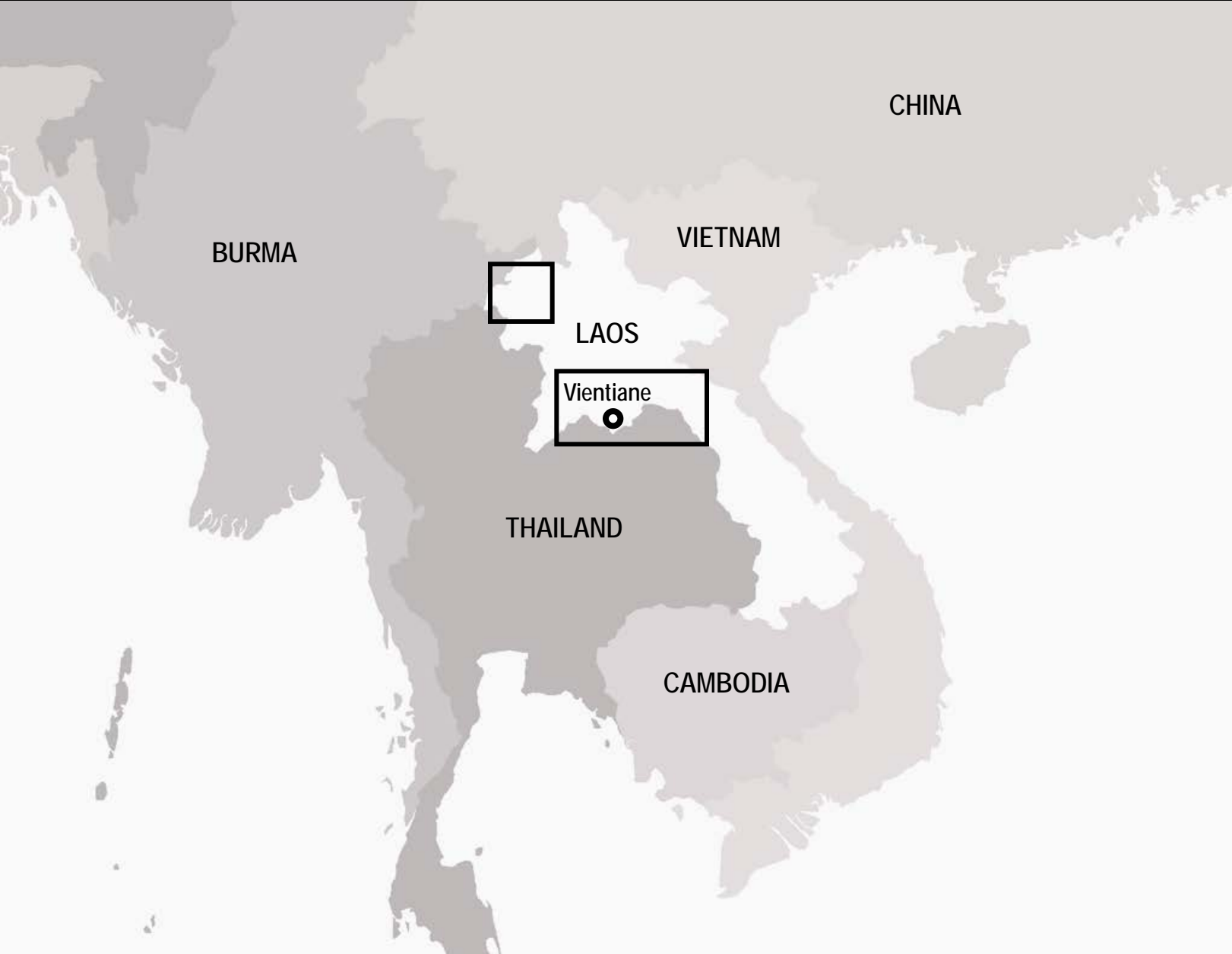
VIETNAM

LAOS

Vientiane

THAILAND

CAMBODIA



BURMA



LAOS



Vientiane

THAILAND

CAMBODIA

VIETNAM

CHINA

I. Structural biography



GMS task force plans for July

...

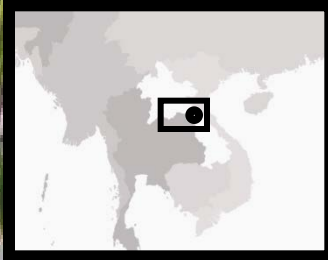
Coconut plantation to create thousands of jobs

Ethnic New Year goes international

...

No one delivers the goods like we do.

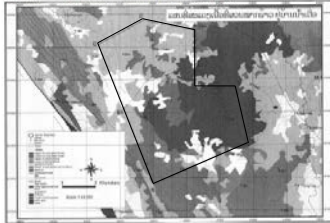
...



Coconut plantation to create thousands of jobs

Japanese Oji company, which in 2005 took over the New Zealand-based BORE company in a joint venture which gave a 15% share to the state, requested 50,000 ha in Bolikhamsay Province. So far the province has provided only 1,500 ha of state land, and Oji is moving to get more land for its eucalyptus plantation, which will involve encroachment on private land parcels. According to Oji there is no encroachment on private plots as land-use planning and land allocation before the concession designated the land as state land. However, on a field visit to the project area there was evidence of individual plots, with farmers using machinery to process their harvest. Oji has a social programme for villages affected by its operations, systematically giving villages \$50 per ha spread over 50 years for water supply and school building. The company allows local people to plant rice where they used to, and to plant soybeans between tree rows, which the local authorities asked the Oji to make further apart. Further south in Savannakhet, a Thai sugar cane planter is buying private agricultural land at market price as the state can only provide scarce areas of land.

Figure 10. Concession area granted to Lao World Group

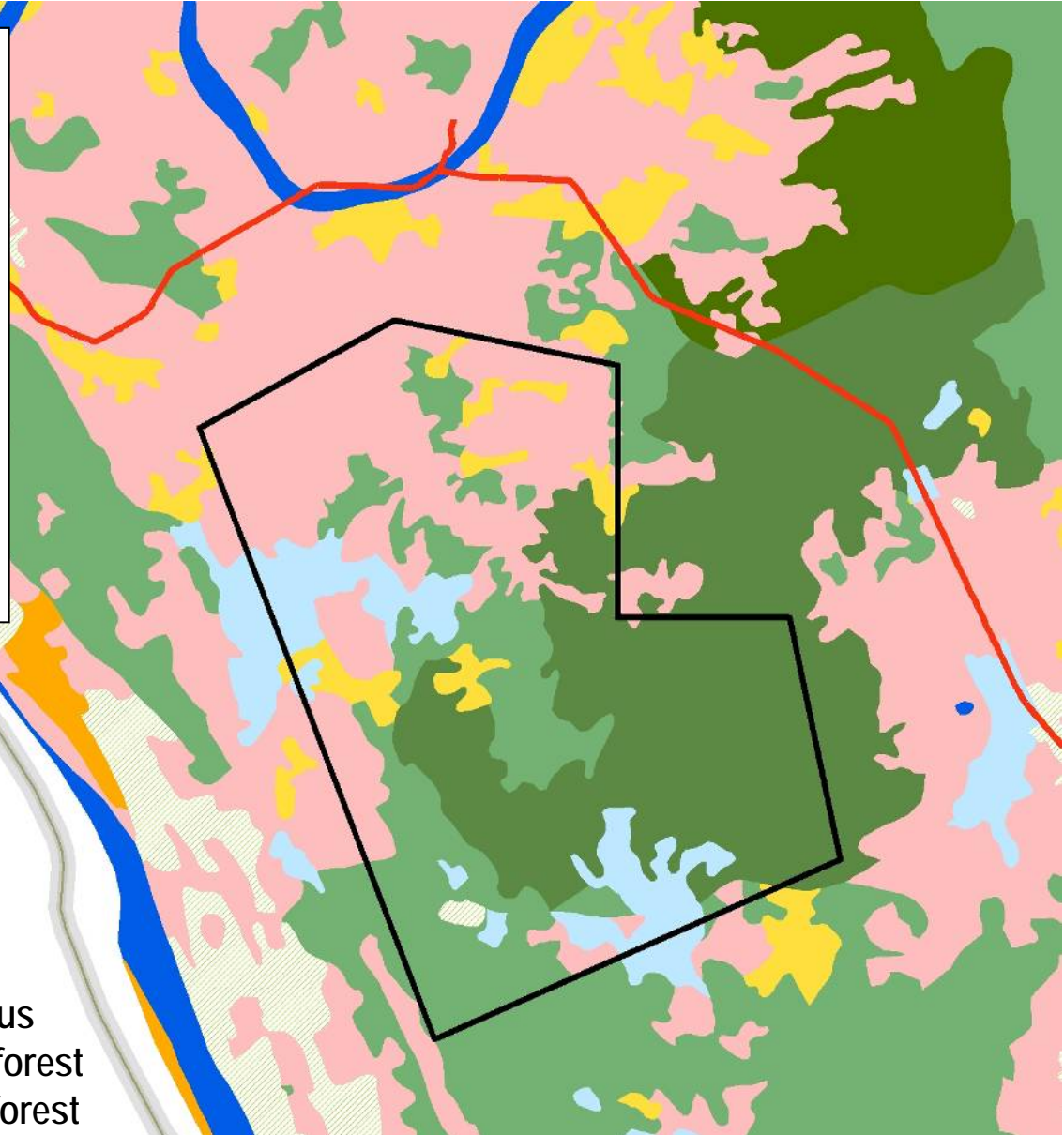


6.4.6. Consolidation in Urban Areas

Generally, as the demographic pressure and land pressure are low in Laos, there is no need to enlarge urban plots as vast areas are still available and people have enough land for living and making a living. Furthermore town planning often involves creating a new town and consequently allocating the land as happened at Pakxan, Bolikhamsay Province. The only land consolidation recorded in the province in 2008 occurred at Pakxan and concerned less than 100 m² for residential purposes. In the past, the only land consolidation in memory of the land officials happened at the old French military base, with the area where the Phousoi Hotel is located carved out of the military camp. Similarly the Post Office and the bus station are located on what was previously a marshy area occupied by military families, who in 1993-1994 were given new land parcels elsewhere.

5 km

-  Unstocked forest
-  Grassland
-  Swidden
-  Rice paddy
-  Lower mixed deciduous
-  Lower dry evergreen forest
-  Upper dry evergreen forest



Laos delivers a summit to remember



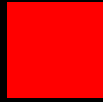
Rally begins: The ASEAN-India car rally flagging-off ceremony marks the official start of the race across the region, which will pass through Savannakhet next and then cross to Vietnam. The ceremony was held at the ITECC yesterday to celebrate the ASEAN Summit and was started by Lao Prime Minister Bounnhang Vorachit and Indian Prime Minister Dr Manmohan Singh. --PHOTO KHAMPHAN



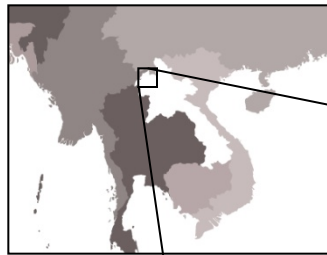
II. Legibility inventory



Approved land deal with map (provincial level)

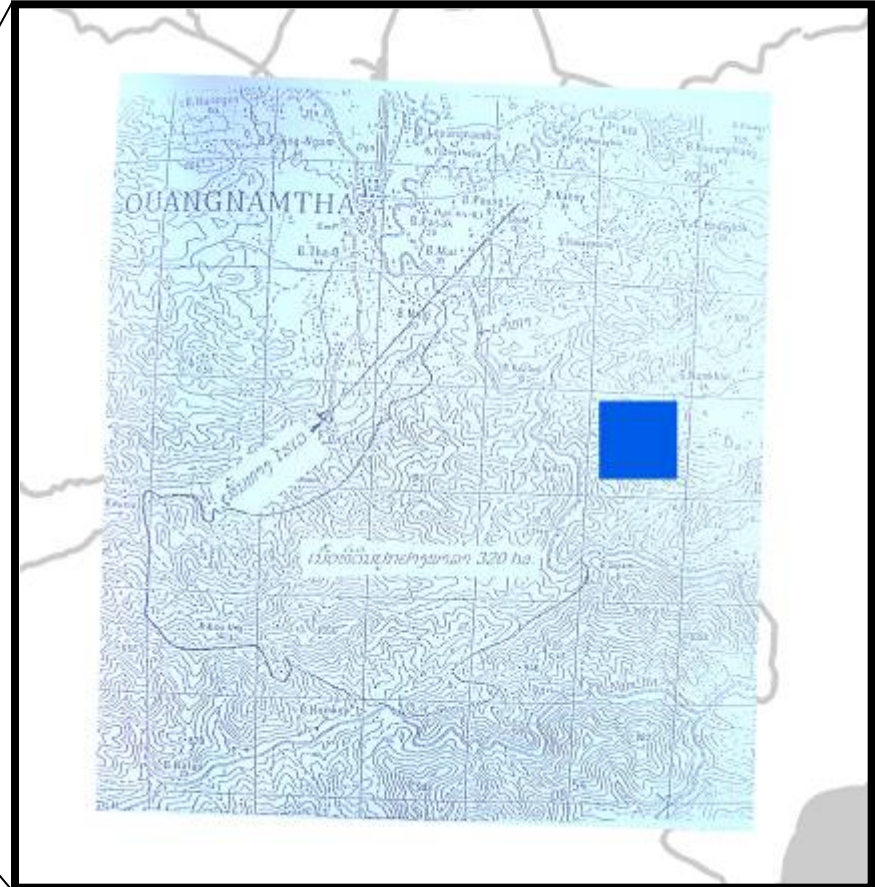
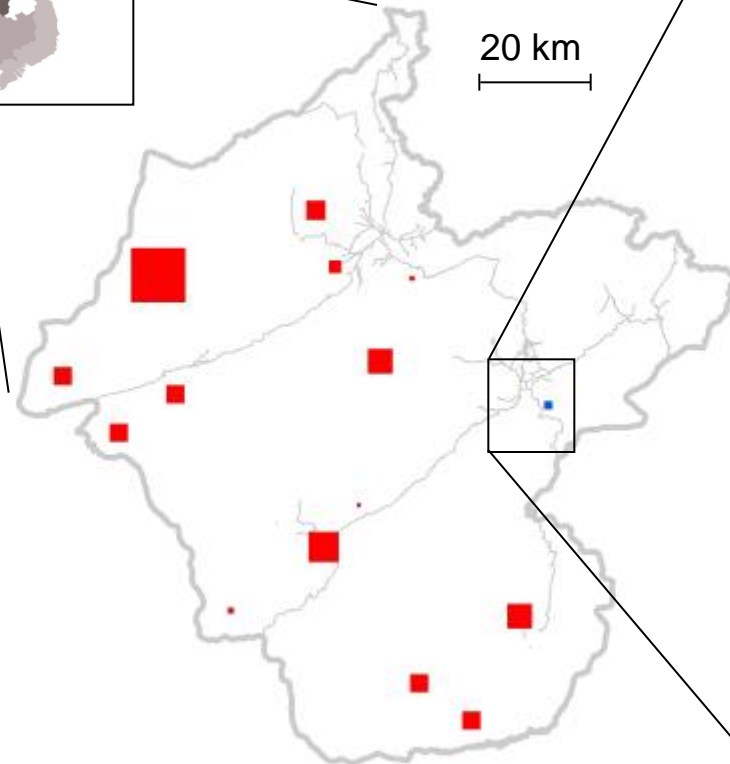


Approved land deal, no map (provincial level)



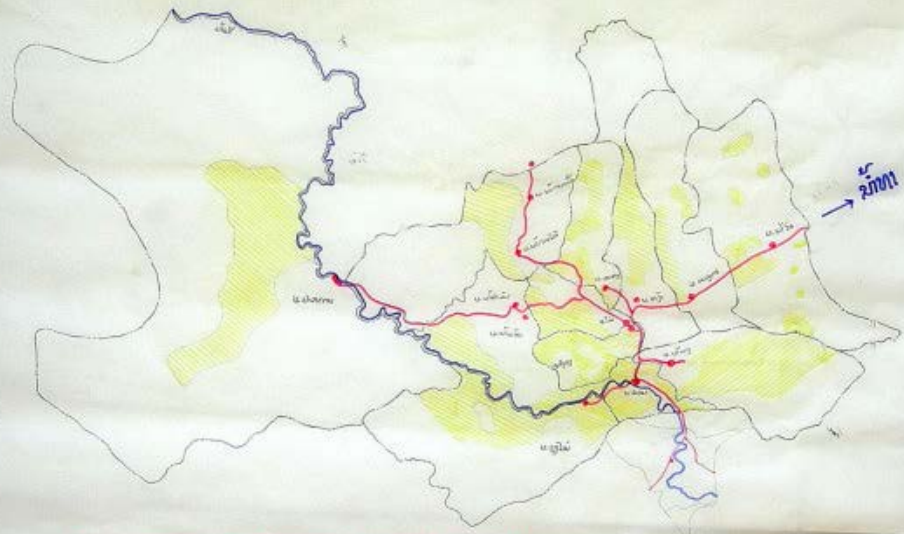
20 km

- 35 ha
- 70 ha
- 100 ha
- 214 ha
- 500 ha
- 1,000 ha
- 1,000 ha
- 1,000 ha
- 1,004 ha
- 1,050 ha
- 1,200 ha
- 2,000 ha
- 2,000 ha
- 3,000 ha
- 10,000 ha



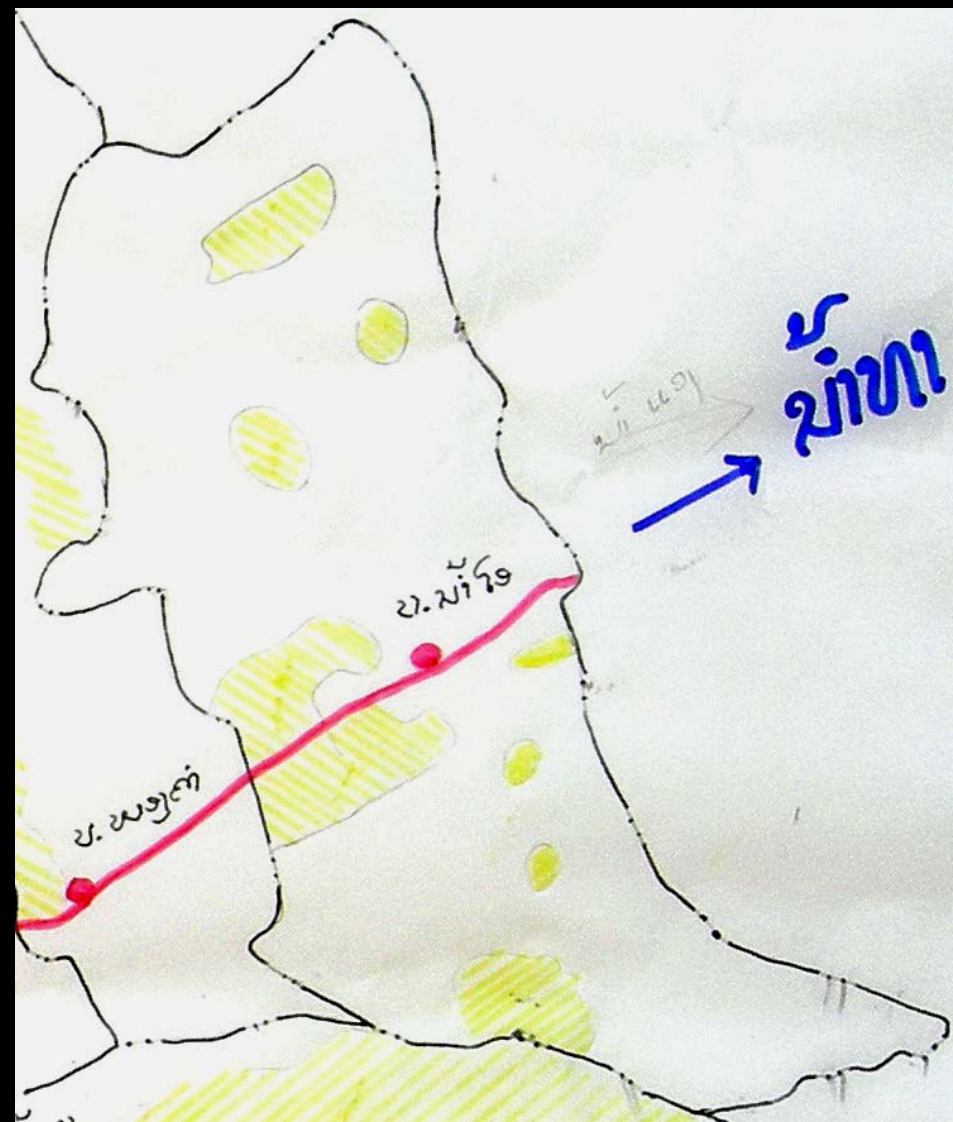
III. Map genealogy

Zhen Hua Trading Company rubber planting promotion project target village land use map



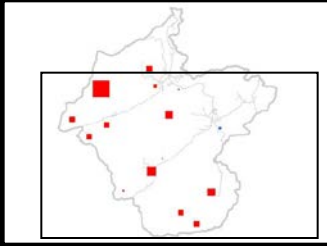
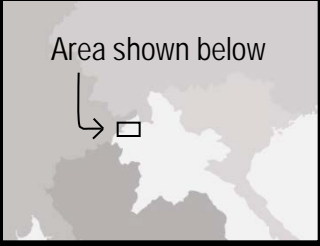
ประเภทที่ดิน	เนื้อที่	เนื้อที่รวม	เนื้อที่ปลูก
พื้นที่ปลูก	1,125	6,800.00 ไร่	200 ไร่
พื้นที่ว่าง	2,500	2,500.00 ไร่	200 ไร่
พื้นที่น้ำ	1,000	1,000.00 ไร่	100 ไร่
พื้นที่ป่า	1,500	1,500.00 ไร่	100 ไร่
พื้นที่อื่น	1,000	1,000.00 ไร่	100 ไร่
พื้นที่รวม	7,125	7,125.00 ไร่	700 ไร่
พื้นที่ปลูกยาง	1,125	1,125.00 ไร่	100 ไร่
พื้นที่ว่าง	2,500	2,500.00 ไร่	200 ไร่
พื้นที่น้ำ	1,000	1,000.00 ไร่	100 ไร่
พื้นที่ป่า	1,500	1,500.00 ไร่	100 ไร่
พื้นที่อื่น	1,000	1,000.00 ไร่	100 ไร่

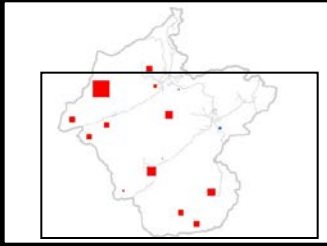
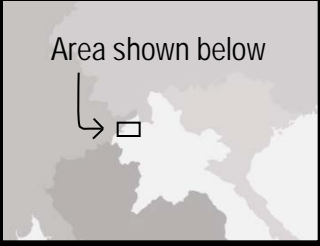
ขนาดทาสี 1:60,000

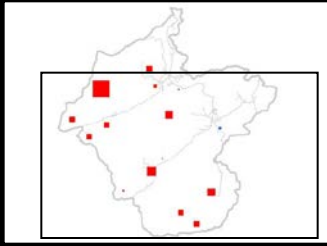
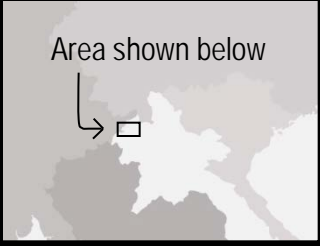




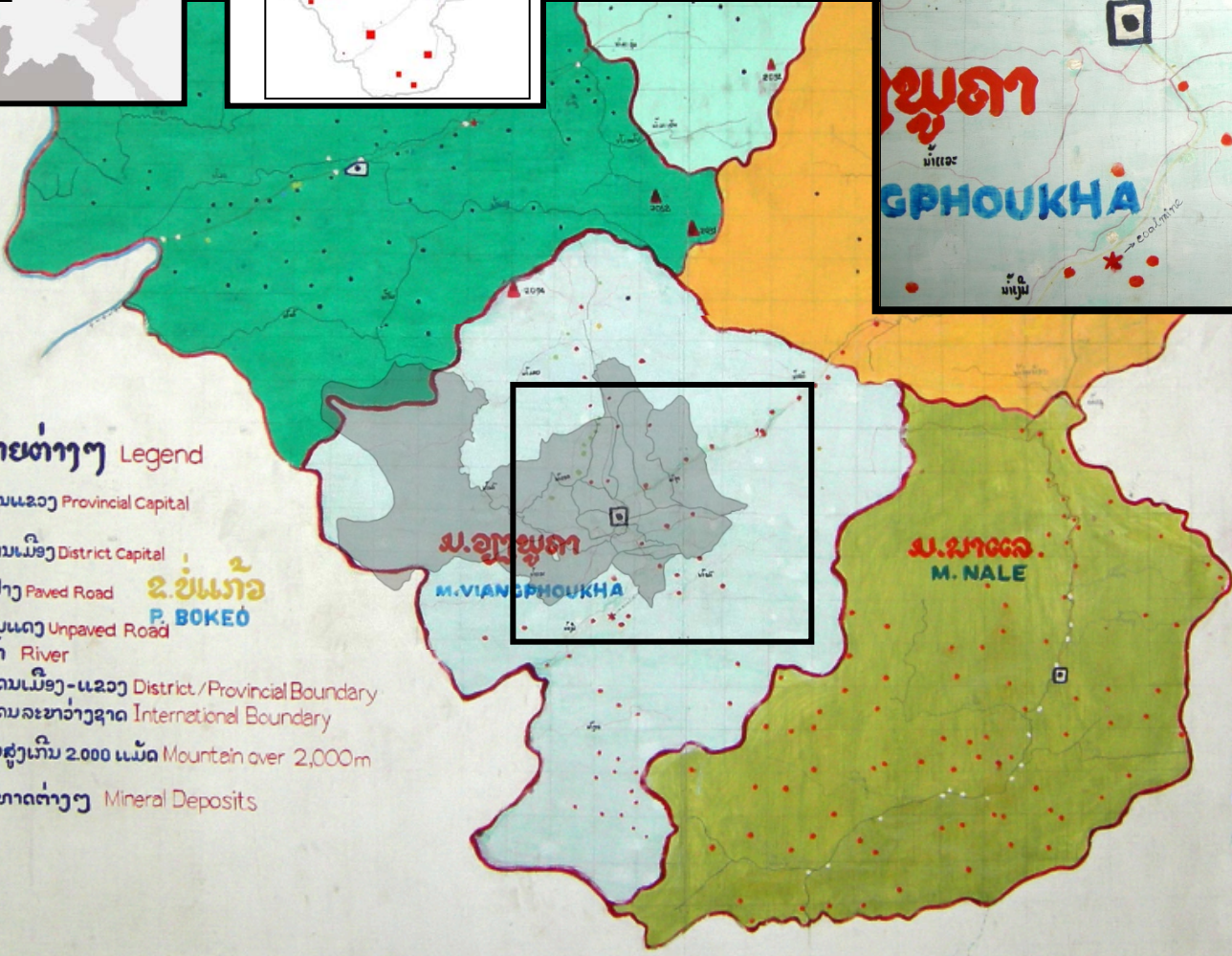
Document room, District Agriculture & Forestry Office







Informational text in Lao and English, including a title and several paragraphs of text.



ເຄື່ອງໝາຍຕ່າງໆ Legend

- ທີ່ວ່າການແຂວງ Provincial Capital
- ທີ່ວ່າການເມືອງ District Capital
- ທາງຢູ່ຢາງ Paved Road
- ທາງດິນແດງ Unpaved Road
- ສາຍນ້ຳ River
- ຊາຍແດນເມືອງ-ແຂວງ District / Provincial Boundary
- ຊາຍແດນລະຫວ່າງຊາດ International Boundary
- ຈອມພູສູງເກີນ 2.000 ແມັດ Mountain over 2,000m
- ບໍ່ແຮ່ທາດຕ່າງໆ Mineral Deposits

- ບ. ເພົ້າລາວເທິງ Lao Theung
- ບ. ເພົ້າລີ້ Lue
- ບ. ເພົ້າລາວຫ້ວຍ Lantaen
- ບ. ເພົ້າລາວຍວນ Lao Yuan
- ບ. ເພົ້າມັງ Hmong
- ບ. ເພົ້າໄຕ້ດຳ Tai Dam
- ບ. ເພົ້າກຸ້ຍ Kui
- ບ. ເພົ້າສີດາ Sida
- ບ. ເພົ້າອີ້ວມຸ້ນ (ຍ້າວ) Yao
- ບ. ເພົ້າປານາ Pana
- ບ. ເພົ້າຢັ່ງ Yang
- ບ. ເພົ້າລາວກໍ່ Akha
- ບ. ເພົ້າໄຕ້ເໜືອ Tai Neua

ຂ.ບໍ່ແກ້ວ
P. BOKEO

ນ.ວຽງພູຄາ
M. VIAN GPHOUKHA

ນ.ນາແລ
M. NALE

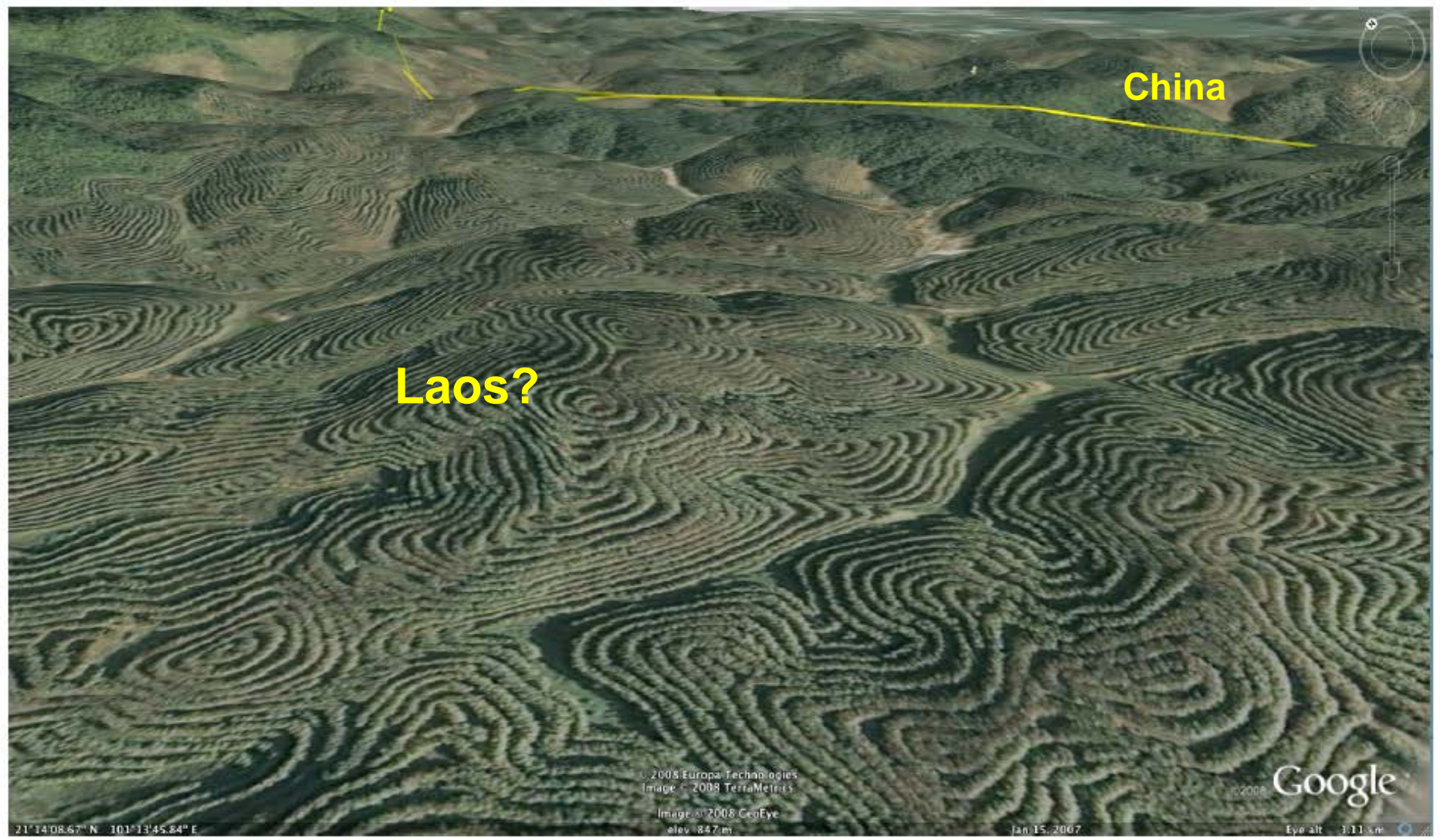
Acknowledgments

U.S.

- University of California: Energy & Resources Group; Department of Environmental Science, Policy & Management; Department of Geography
- Andrew R. Mellon Foundation & the Social Science Research Council
- National Science Foundation, Geography and Regional Science Division
- University of California, Pacific Rim Research Program
- University of California, Center for Southeast Asian Studies

Laos

- National University of Laos, Centre for Environment and Development Studies
- Lao National Land Management Authority
- Land Issues Working Group, INGO Network



China

Laos?

21°14'08.67" N 101°13'45.84" E

© 2008 Europa Technologies
Image © 2008 TerraMetrics
Image © 2008 GeoEye
elev: 847m

Jan 15, 2007

Google

Eye alt: 1.11 km

GoogleEarth imagery, November 2008

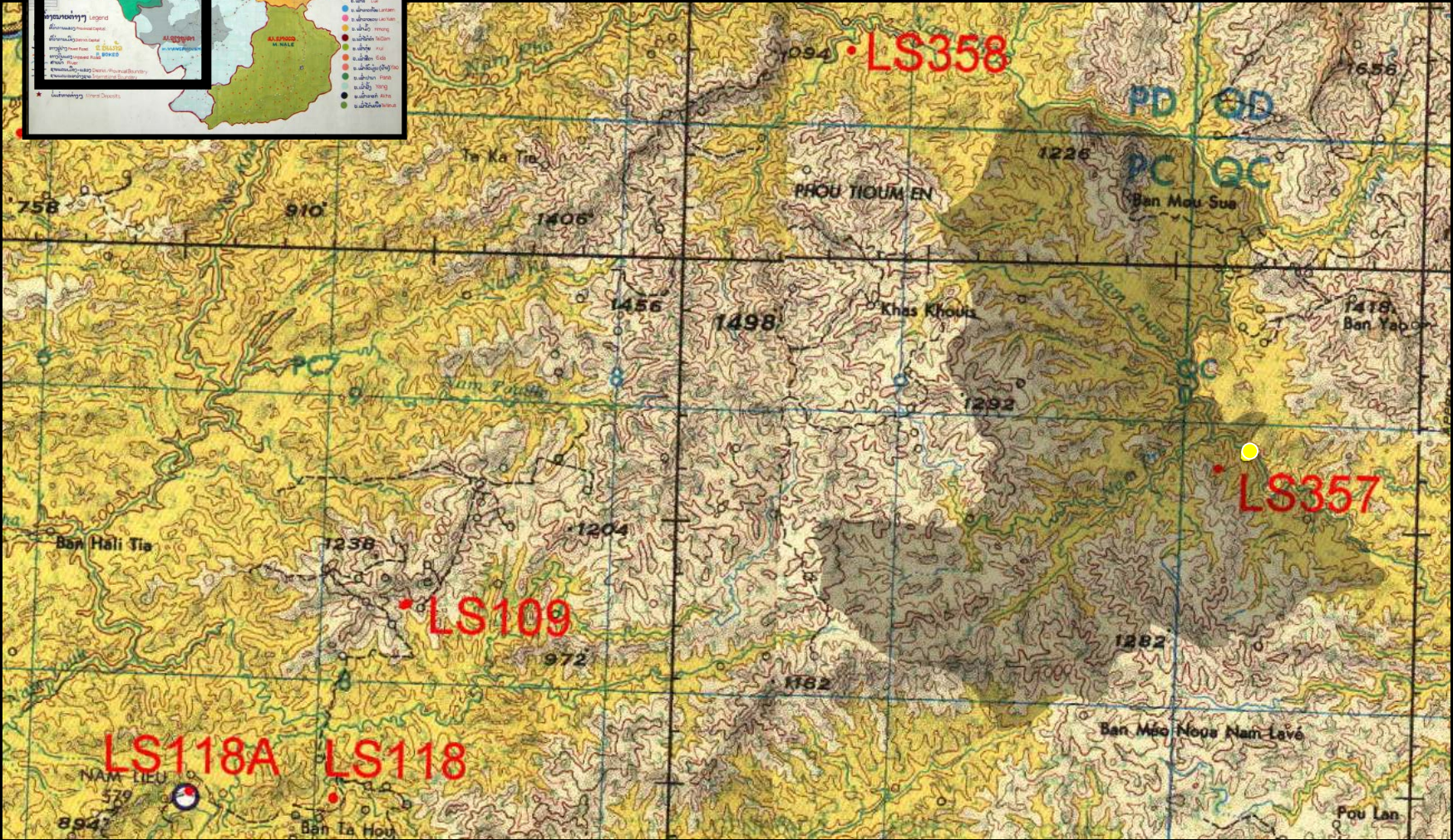
21°14'08.67" N 101°13'45.84" E

Legend

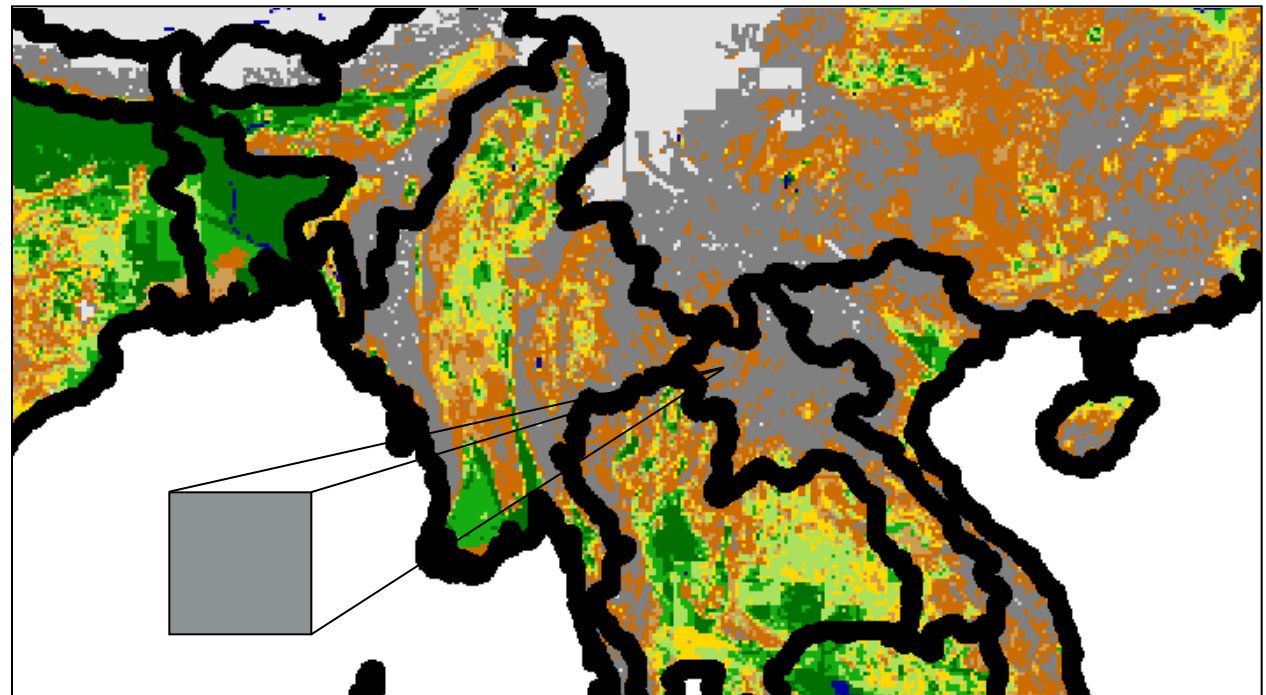
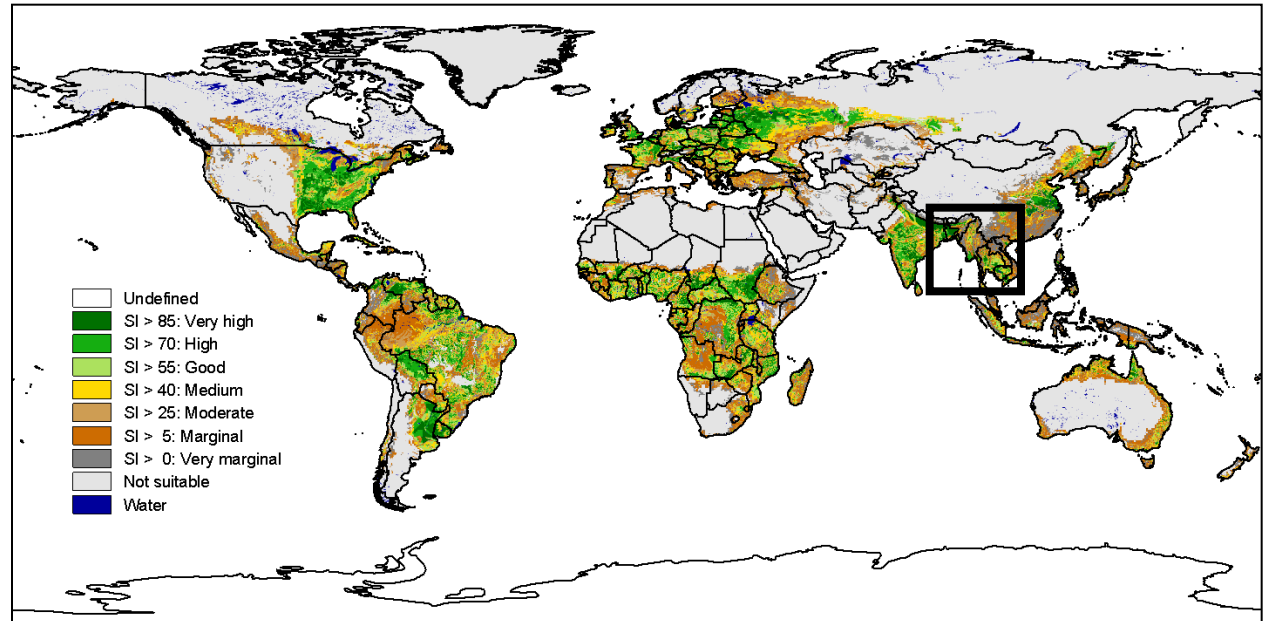
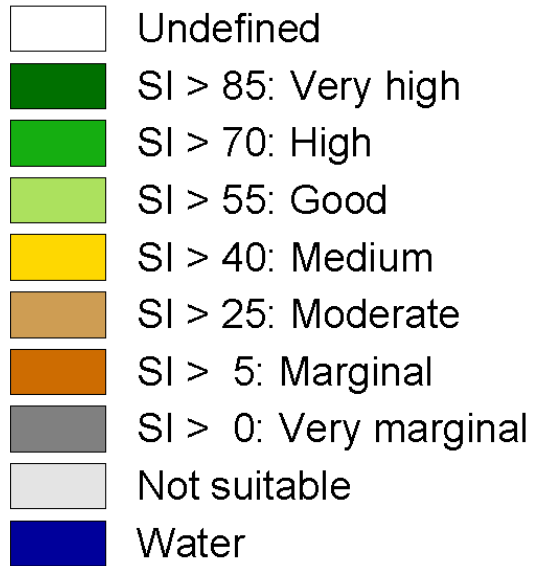
- 0-500m
- 500-1000m
- 1000-1500m
- 1500-2000m
- 2000-2500m
- 2500-3000m
- 3000-3500m
- 3500-4000m
- 4000-4500m
- 4500-5000m
- 5000m+

Legend

- 0-500m
- 500-1000m
- 1000-1500m
- 1500-2000m
- 2000-2500m
- 2500-3000m
- 3000-3500m
- 3500-4000m
- 4000-4500m
- 4500-5000m
- 5000m+



"Suitability for rain-fed cereals (high level of inputs)" (Fischer et al. 2002, plate 31)



Area shown below







2-province total approved

~58,000 ha

Areas BELOW 800 masl

Areas ABOVE 1,000 masl

10,000 ha

1,000 ha

3,000 ha

